

*INDIA'S NO.1
SELLING MPV** | **ERTIGA**





EXTERIOR

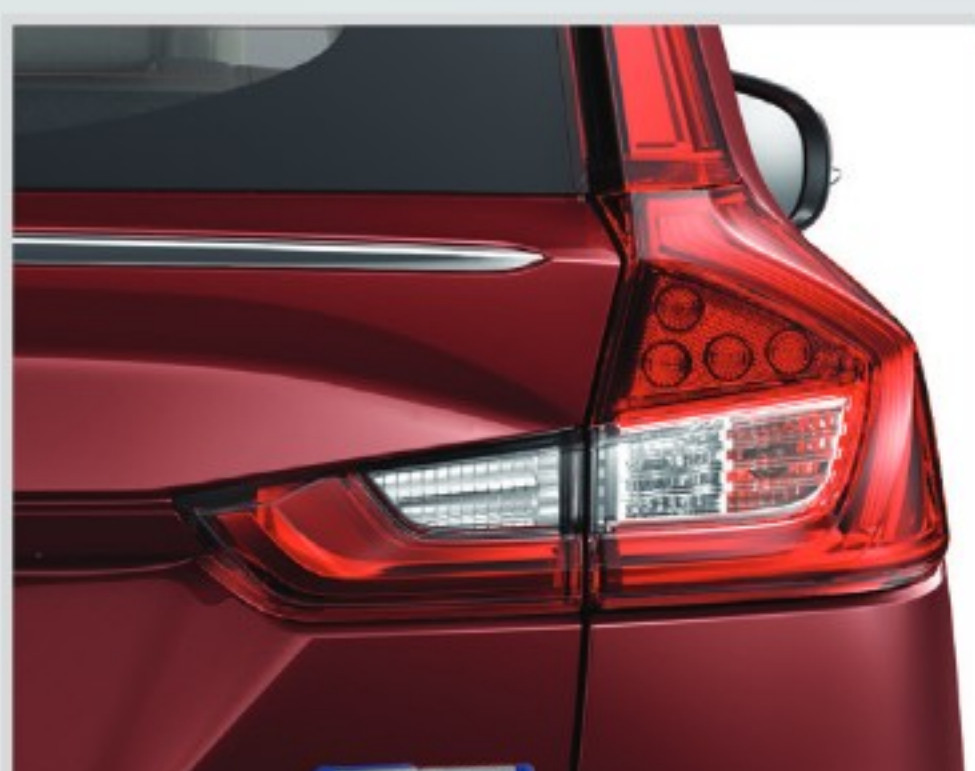
Elegant design and bold details define a confident road presence.



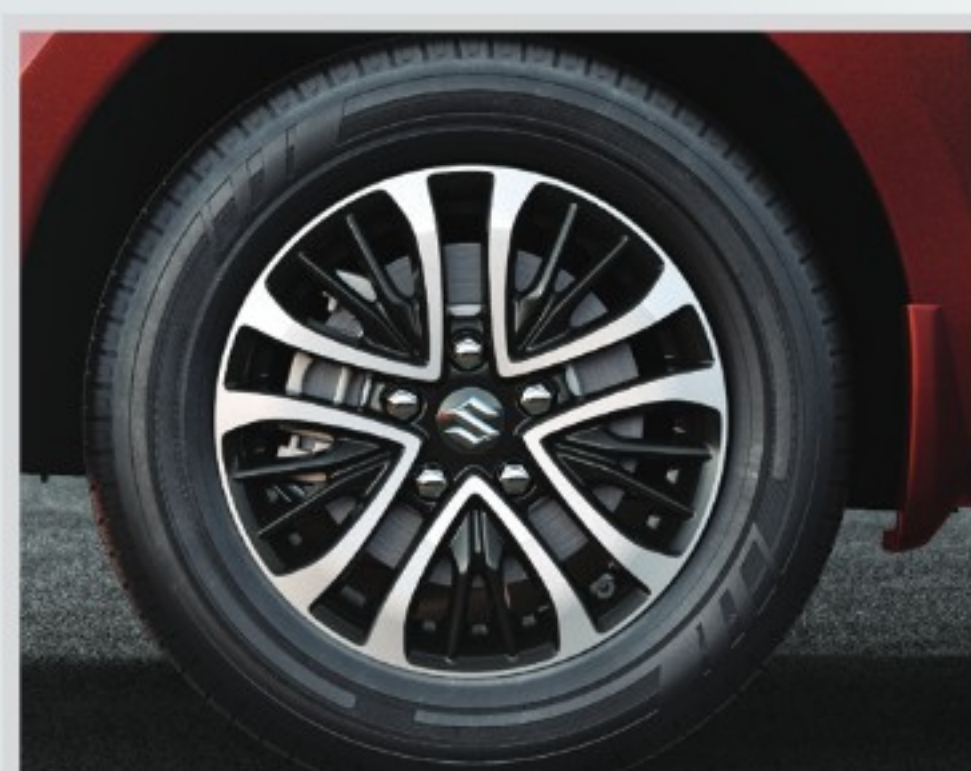
► Dynamic Chrome Winged Front Grille



► Projector Headlamps



► 3D Origami Style LED Tail Lamps



► Machined Two-tone Alloy Wheels



► Rear Roof Spoiler

INTERIOR

Designed to offer both space and sophistication.



▶ 2nd Row Console AC Vents



▶ 3rd Row AC with 3-Stage Control



▶ Automatic Climate Control



▶ PM2.5 Filter



▶ USB Fast Charger Type C



▶ Smart Flexi Seating



▶ Sculpted Dashboard with Metallic Teak-Wooden Finish



▶ Steering Mounted Audio Controls



▶ Instrument Cluster

TECHNOLOGY

Intelligent features make every journey easier and more connected.



► 17.78cm SmartPlay Pro



► Cruise Control



► 6-Speed AT



► Paddle Shifters

► Suzuki Connect with Smartwatch Connectivity



PERFORMANCE

Refined power and smooth handling elevate every drive.



BS6
compliant



DRIVE SMART. CHOOSE GREEN.



Fuel Efficiency

CNG	PETROL
26.11 [#] km/kg	20.51 [#] km/l

▶ Next Gen 1.5L K-Series Engine with Smart Hybrid Technology

Dynamic performance. Unmatched driving comfort.

▶ Next Gen 1.5L K-Series Engine with S-CNG Technology

Enjoy performance that's driven with safety and savings.



SAFETY

The reliable and proven HEARTECT Platform coupled with 6 Airbags as Standard are engineered to cocoon every passenger in complete safety and peace of mind.

► 6 Airbags as Standard



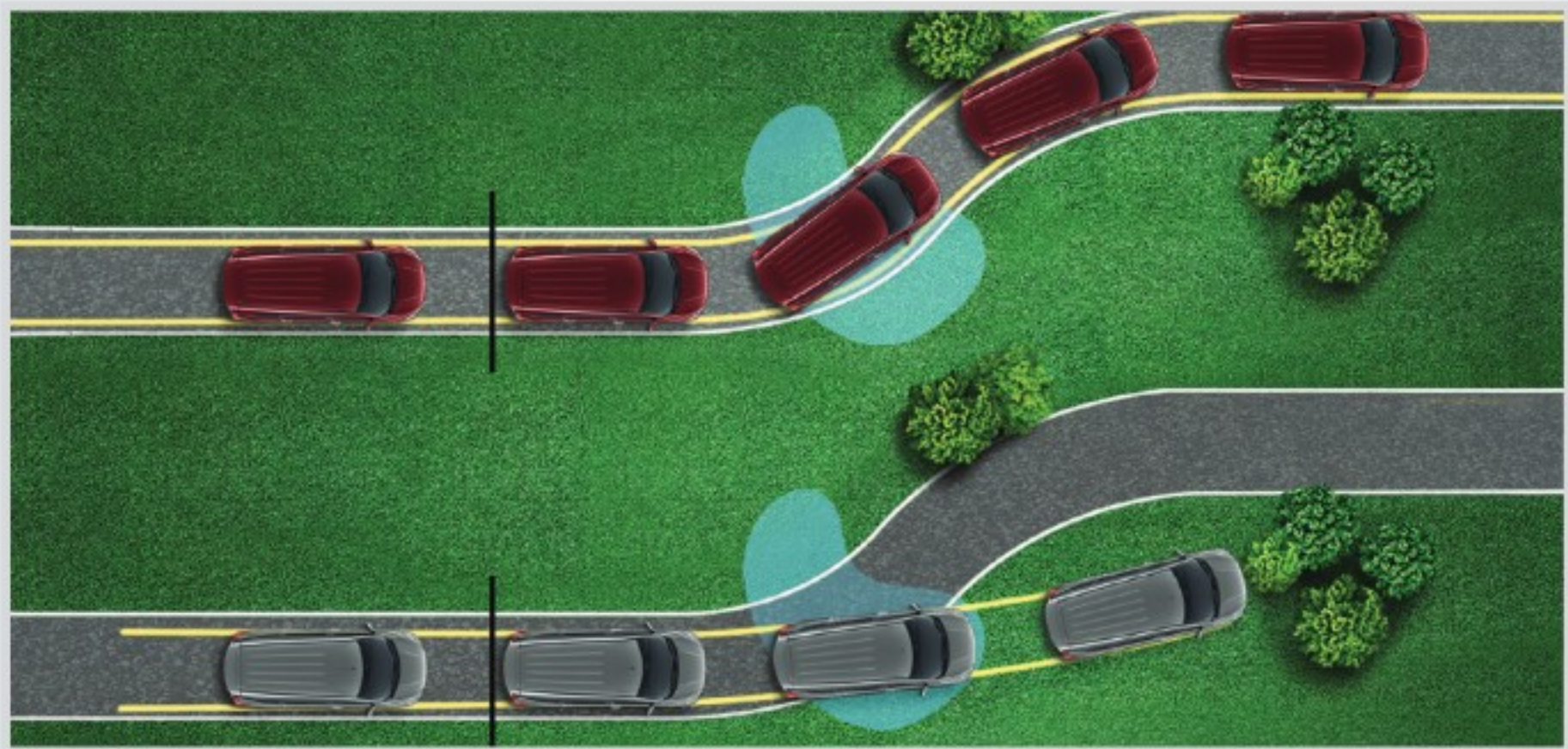
► TPMS



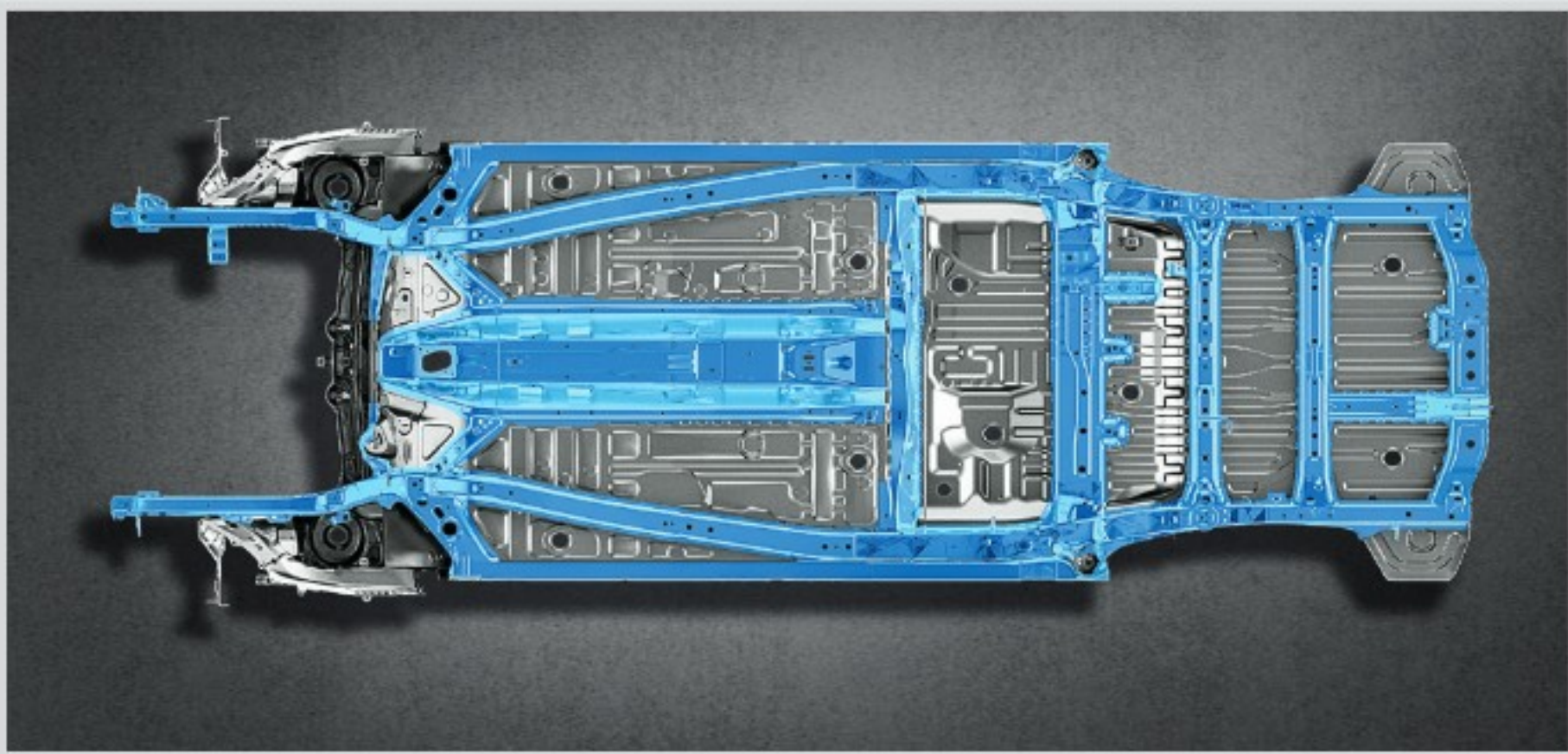
► Hill Hold Assist



► ESP®



► ABS+EBD



► HEARTECT Platform



► Rear Parking Camera

EQUIPMENT LIST

FEATURES & SPECIFICATIONS	VARIANTS			
Grade Name	LXi MT	VXi MT / VXi AT / VXi CNG	ZXi MT / ZXi AT / ZXi CNG	ZXi+ MT/ ZXi+ AT
INTERIOR				
Sculpted Dashboard with Mettalic Teak-Wooden Finish	-	-	✓	✓
Mettalic Teak-Wooden Finish on Door Trims (Fr.)	-	-	✓	✓
Premium Dual Tone Interiors	✓	✓	✓	✓
Height Adjustable Driver Seat	-	-	✓	✓
2nd Row 60:40 Split Seats with One Touch Recline & Slide	✓	✓	✓	✓
3rd Row 50:50 Split Seats with Recline function & Flat Fold	✓	✓	✓	✓
Flexible luggage space with Flat Fold (3rd Row)	✓	√(Except CNG)	√(Except CNG)	✓
Plush Dual-Tone Seat Fabric	-	-	✓	✓
Fr. Seat Back Pockets	-	Co-driver	✓	✓
Sliding Armrest with Utility Box (Front Row)	-	✓	✓	✓
Leather Wrapped Steering Wheel with Metallic Teak-Wooden Finish	-	-	-	✓
Adjustable Headrest (All Rows)	✓	✓	✓	✓
Split Type Luggage Board	-	√(Except CNG)	√(Except CNG)	✓
Driver Side Sunvisor with Ticket Holder	✓	✓	✓	✓
Passenger Side Sunvisor with Vanity Mirror	-	✓	✓	✓
Dazzle Chrome Tipped Parking Brake Lever	-	✓	✓	✓
Gear Shift Knob with Dazzle Chrome Finish	-	✓	✓	✓
EXTERIOR				
Rear Roof Spoiler	✓	✓	✓	✓
Projector Headlamps (Halogen)	✓	✓	✓	✓
3D Origami Style LED Tail Lamps	✓	✓	✓	✓
Dynamic Chrome Winged Front Grille	Painted	Chrome	Chrome	Chrome
Floating Type Roof Design in Rear	✓	✓	✓	✓
Full Wheel Caps	✓	✓	-	-
Machined Two-tone Alloy Wheels***	-	-	✓	✓
Turn Signal Lamp Integrated in ORVMs	-	✓	✓	✓
Back Door Garnish with Chrome Insert	-	-	✓	✓
Rear Wiper & Washer	-	-	✓	✓
Body Coloured Door Handles	-	✓	-	-
Chrome Plated Door Handles	-	-	✓	✓
Body Coloured ORVMs	-	✓	✓	✓
INSTRUMENT CLUSTER				
MID With Coloured TFT	✓	✓	✓	✓
Tachometer	✓	✓	✓	✓
Gear Shift Indicator (MT)	✓	✓	✓	✓
Digital Clock	✓	✓	✓	✓
Outside Temperature Gauge	-	-	✓	✓
Fuel Consumption (Instantaneous and Avg)**	✓	✓	✓	✓
Dedicated CNG Fuel Gauge	-	✓ (CNG)	✓ (CNG)	-
Total CNG Mode Time	-	✓ (CNG)	✓ (CNG)	-
Distance to Empty**	✓	✓	✓	✓
Headlamp On Warning	✓	✓	✓	✓
Door Ajar Warning Lamp	✓	✓	✓	✓
COMFORT & CONVENIENCE				
Engine Push Start/Stop with Smart Key	-	-	✓	✓
Front Row AC	✓ (Manual)	✓ (Manual)	✓ (Auto)	✓ (Auto)
2nd Row AC Vents	-	✓	✓	✓
3rd Row AC with 3 Stage Control	-	✓	✓	✓
PM2.5 Filter	-	-	-	✓
Front Twin Cup Holders (Console)	✓	✓	✓	✓
Rear Defogger	-	-	✓	✓
Remote Keyless Entry	-	✓	✓ (Smart Key)	✓ (Smart Key)
Power Socket (12V) Front Row with Smartphone Storage Space	✓	✓	✓	✓
USB Charger 2nd Row (PD Type Max 60W) Type C + C	-	✓	✓	✓
2nd Row Smart Phone Storage Space	-	-	✓	✓
USB Charger 3rd Row (PD Type Max 60W) Type C + C	-	-	✓	✓
Power Windows (Fr/Rr) with Dr. Side Auto Down Functions	✓	✓	✓	✓
Auto Window Up (Dr. Side with anti-pinch)	-	✓	✓	✓
Day & Night Adjustable IRVM (Manual)	-	✓	✓	✓
Power & Tilt Steering	✓	✓	✓	✓
Electrically Adjustable ORVMs	-	✓	✓	✓
Electrically Foldable ORVMs	-	✓	✓	✓
Retractable ORVMs (Key Operated)	-	-	-	✓
Bottle Holders (in each row)	✓	✓	✓	✓
Coin/Ticket Holder (Driver Side)	✓	✓	✓	✓
Cabin Lamp (Fr.+Rr.)	✓	✓	✓	✓
Cruise Control	-	-	-	✓
Paddle Shifters	-	√(AT)	√(AT)	√(AT)
Foot Rest	✓	✓	✓	✓
Courtesy Lamp	-	-	-	✓
Auto Headlamps with Follow Me Home/Lead me to Vehicle Feature	-	-	-	✓
INFOTAINMENT SYSTEM				
17.78cm SmartPlay Pro Touch Screen Infotainment System	-	-	-	✓
17.78cm SmartPlay Studio Touch Screen Infotainment System	-	-	✓	-
Premium Sound System	-	-	-	ARKAMYS (Surround Sense)
Android Auto~ & Apple Car Play~	-	-	✓	✓ Wireless
Audio System with Electrostatic Touch Buttons	-	✓	-	-
Bluetooth Connectivity	-	✓	✓	✓
Speakers (4)	-	✓	✓	✓
Tweeters (2)	-	-	✓	✓
USB and AUX Connectivity	-	✓	✓ USB Only	✓ USB Only
Steering Mounted Audio Control	-	✓	✓	✓
Steering Mounted Calling Control	-	✓	✓	✓

*As certified by Test Agency Under Rule 115 of CMVR 1989. **Except CNG.

COLOUR SPECIFICATIONS

						
Auburn Red	Dignity Brown	Magma Grey	Oxford Blue	Arctic White	Splendid Silver	Bluish Black**

Fr-Front; Rr-Rear; AT-Automatic Transmission; MT- Manual Transmission; MID: Multi Information Display

Maruti Suzuki India Limited reserves the right to change, without notice, price, colours, equipment specifications, and models and also to discontinue models and/or replace any part or accessory with any product. Any offers made will be subject to availability of the product. For more details, contact your nearest store. The black glass in the vehicle is due to lighting effect. Images are for reference purpose only. Accessories and features shown in the pictures may not be part of standard equipment. Features shown may vary from variant to variant. Colours may vary from actual body colour due to printing on paper. All images in this brochure are creative visualisation. ***Spare wheel is of steel material.

~Apple and iPhone are trademarks of Apple Inc. registered in the U.S. and other countries. Apple CarPlay is a trademark of Apple Inc.. Apple CarPlay is available in the countries listed in the following link: <http://www.apple.com/ios/feature-availability/#applecarplay-applecarplay>. Apple CarPlay is compatible with the iPhone models listed in the following link: <http://www.apple.com/ios/carplay>. **Android Auto~ extends the Android platform into the car in a way that's purpose-built for driving. It is designed to minimise distraction so you can focus on driving with Google™ services like Google Maps™ and Google Search™. Get the Android Auto app on Google Play™. Android Auto is available in the countries listed at the following link: <https://www.android.com/auto/rhlt-the-road>. Most phones with Android 5.0+ work with Android Auto: <https://support.google.com/androidauto/#6140477>. Android, Android Auto, Google, Google Play and other marks are trademarks of Google Inc. Image used are for illustration purposes only. *The speed alert system gives audible warning for alert of over-speed to driver. When vehicle speed exceeds about 80 km/h, primary level warning with two beeps will sound every minute. When the vehicle speed exceeds about 120 km/h, secondary level warning with continuous beeps will sound. If the vehicle speed is slowed down to about 118 km/h, primary warning will resume. If the vehicle is slowed down to about 78 km/h, speed alert warning will stop. This buzzer does not indicate any malfunction in vehicle. **Suzuki Connect (available through phone/smartwatch/Suzuki connect skill for Amazon Alexa). **Low fuel Applicable for Petrol mode only in CNG variant. ***Applicable only in Autoheadlamp variants. ****Amazon, Alexa and all related marks are trademarks of Amazon.com, Inc. or its affiliates. ****3 years or 100 000 km whichever is earlier. Extendable up to 6 years or 160 000 km whichever is earlier. **Available in all variants for both Petrol and CNG except LXi. ESP is the registered trademark of Mercedes-Benz Group AG. **3 Years or 100 000 km whichever earlier, *No.1 Selling MPV Claim verified by JATO Dynamics as on 10th July 2025.

SAFETY & SECURITY				
Suzuki HEARTTECT Platform	✓	✓	✓	✓
6 Airbags (Front, Side and Curtain)	✓	✓	✓	✓
Tyre Pressure Monitoring System (TPMS)	-	-	-	✓
ABS with EBD and Brake Assist	✓	✓	✓	✓
Engine Immobilizer	✓	✓	✓	✓
Electronic Stability Program	✓	✓	✓	✓
Hill Hold	✓	✓	✓	✓
ISOFIX Child Seat Anchorages (2nd Row Seats)	✓	✓	✓	✓
Front Seat Belts with Pre-tensioner & Force Limiters (Dr.+Co-Dr.)	✓	✓	✓	✓
Seat Belt Reminder Lamp and Buzzer (All Passengers)	✓	✓	✓	✓
All Seat Belts (3-Point ELR)	✓	✓	✓	✓
Front Seat Belt Height Adjuster	✓	✓	✓	✓
High Speed Alert System*	✓	✓	✓	✓
Speed Sensitive Auto Door Lock	✓	✓	✓	✓
Security Alarm	-	✓	✓	✓
Rear Parking Sensors	✓	✓	✓	✓
Rear Parking Camera	-	-	✓	✓
Central Locking	✓	✓	✓	✓
Front Fog Lamps	-	-	✓	✓
**SUZUKI CONNECT				
Safety and Security				
Emergency Alerts	-	-	✓	✓
Breakdown Notification	-	-	✓	✓
Stolen Vehicle Notification and Tracking	-	-	✓	✓
Tow Away Alert and Tracking	-	-	✓	✓
Geo-Fence	-	-	✓	✓
Time Fence	-	-	✓	✓
Valet Alert	-	-	✓	✓
Trips and Driving Behaviour	-	-	✓	✓
Trip Summary	-	-	✓	✓
Driving Behavior	-	-	✓	✓
Share Trip History	-	-	✓	✓
Area Guidance Around Destination	-	-	✓	✓
Vehicle location Sharing	-	-	✓	✓
Alerts and Notifications				
Overspeed	-	-	✓	✓
Seatbelt	-	-	✓	✓
AC Idling	-	-	✓	✓
Trip (Start & End)	-	-	✓	✓
Low Fuel** & Low Range**	-	-	✓	✓
Dashboard View	-	-	✓	✓
Remote Functions				
Door Lock/Cancel Lock	-	-	✓	✓
Hazard Light ON/OFF	-	-	✓	✓
Headlight OFF***	-	-	✓	✓
Alarm	-	-	✓	✓
Immobilizer Request	-	-	✓	✓
Battery Health	-	-	✓	✓
Smartwatch Connectivity	-	-	✓	✓
Suzuki connect skill for Amazon, Alexa****	-	-	✓	✓
Remote AC	-	-	√(AT)	√(AT)

FEATURES & SPECIFICATIONS	PETROL	CNG
Variants	LXi MT, VXi MT, VXi AT, ZXi MT, ZXi AT, ZXi+ MT, ZXi+ AT	VXi MT, ZXi MT
Dimensions		
Length (mm)	4435	
Width (mm)	1735	
Height (mm)	1690	
Wheelbase (mm)	2740	
Turning Radius (m)	5.2	
Seating Capacity	7	
Engine		
Type	K15C SMART HYBRID	K15C
Capacity (cc)	1462	1462
Compression Ratio	12 ± 0.3	12 ± 0.3
Power (kW@RPM)	75.8 kW (103.06 Ps) @ 6000 rpm	74.0 kW (100.6 Ps) @ 6000 rpm (Petrol Mode) 64.6 kW (87.8 Ps) @ 5500 rpm (CNG Mode)
Torque (Nm@RPM)	139.0 Nm @ 4300 rpm	137.1 Nm @ 4300 rpm (Petrol Mode) 121.5 Nm @ 4200 rpm (CNG Mode)
Emission Type	BS VI	
Fuel Tank Capacity (L)	45	Petrol : 45 CNG: 60 (Water Equivalent)
Idle Start Stop	✓	-
Brake Energy Regeneration	✓	-
Torque Assist	✓	-
Drive & Transmission		
Drive	2WD, FF	
Transmission	5MT / 6AT	5MT
Brake		
Front	Disc	
Rear	Drum	
Suspension		
Front	MacPherson Strut & Coil Spring	
Rear	Torsion Beam & Coil Spring	
Tyre Size	185/65 R15	
Weight		
Kerb Weight (kg)	1175-1225	1270-1275
Gross Vehicle Weight (kg)	1760 (MT), 1785 (AT)	1820

Fr-Front, Rr-Rear, Dr-Driver, MT-Manual Transmission, AT-Automatic Transmission

Drive with a mileage of:

<div>20.51[‡]</div> <div>km/l</div> <div>Petrol</div> <div>LXi MT, VXi MT, ZXi MT, ZXi+ MT</div>	<div>20.30[‡]</div> <div>km/l</div> <div>Petrol</div> <div>VXi AT, ZXi AT, ZXi+ AT</div>	<div>26.11[‡]</div> <div>km/kg</div> <div>CNG</div> <div>VXi MT, ZXi MT</div>	<div>3^{years}</div> <div>100 000 km</div> <div>WARRANTY***</div> <div>EXTENDABLE UPTO 6 YEARS</div>
---	---	--	--



Maruti Suzuki India Limited
Plot No. 1, Nelson Mandela Road,
Vasant Kunj, New Delhi-110070, INDIA

